

Specification			
Identification			
1.1	Manufacturer		Hyundai
1.2	Manufacturer's type designation		80D-7
1.3	Drive: electric (battery or mains),diesel,petrol,fuel gas>manual		DIESEL
1.4	Type of operation:hand,pedestrian,standing,seated,order-picker		seated
1.5	Load capacity / rated load	kg/lb	8,000 / 17,637
1.6	Load center distance	c(mm/in)	600 / 24
1.8	Load distance, center of drive axle to fork	x(mm/in)	690 / 27
1.9	Wheelbase	y(mm/in)	2,400 / 94.5
Weights			
2.1	Service weight	kg/lb	11,140 / 24,560
2.2	Axle loading, loaded front/rear	kg/lb	17,170 / 1,970
2.3	Axle loading, unloaded front/rear	kg/lb	4,870 / 6,270
Wheels, Chassis			
3.1	Tires:solid rubber, superelastic, pneumatic, polyurethane		Pneumatic
3.2	Tires size, front(φ x width)		9.00-20-14PR
3.3	Tires size, rear(φ x width)		9.00-20-14PR
3.5	Wheels, number front x rear (x=driven wheels)		4 x 2
3.6	Track width, front	b10 (mm/in)	1,632 / 64.3
3.7	Track width, rear	b11 (mm/in)	1,700 /66.9
Basic Dimensions			
4.1	Mast/ fork carriage tilt forward / backward (α/β)	degrees	15 / 10
4.2	Lowered mast height	h1 (mm/in)	2,675 / 105.3
4.3	Free lift	h2 (mm/in)	145 / 5.7
4.4	Lift height	h3 (mm/in)	3,040 / 119.7
4.5	Extended mast height	h4 (mm/in)	4,375 / 172
4.7	Overhead load guard (cab) height	h5 (mm/in)	2,603 / 102.5
4.8	Seat height / standing height	h7 (mm/in)	1,464 / 57.6
4.12	Coupling height	h10 (mm/in)	493 / 19.4
4.19	Overall length	l1 (mm/in)	5,000 / 196.9
4.20	Length to face of forks	l2 (mm/in)	3,800 / 149.6
4.21	Overall width	b1 (mm/in)	2,277 / 89.6
4.22	Fork dimensions(hook type)	s / e / l(mm/in)	1,200 x 180 x 70
4.23	Fork carriage ISO 2328, class / type A,B	Class IV	
4.24	Fork-carriage width	b12 (mm/in)	2,268 / 89.3
4.31	Ground clearance, loaded, under mast	m1 (mm/in)	250 / 9.84
4.32	Ground clearance, centre of wheelbase	m2 (mm/in)	287 / 11.3
4.33	Aisle width for pallets 1,000x1,200 crossways (LxW)	Ast (mm/in)	5,410 / 213
4.34	Aisle width for pallets 800x1,200 lengthways (WxL)	Ast (mm/in)	5,610 / 221
4.35	Turning radius	Wa (mm/in)	3,520 / 138.6
4.36	Smallest pivot point distance	b13 (mm/in)	239.5 / 9.4
Performance Data			
5.1	Travel speed, unloaded	km/h / mph	32.7 / 20.3
5.2	Lift speed, loaded/ unloaded	mm/s	(410 / 80.7) / (480 / 94.5)
5.3	Lowering speed, loaded/unloaded	mm/s	(500 / 98.4) / (450 / 88.6)
5.5	Drawbar pull, loaded	kg/lb	6,363 / 11,552
5.7	Gradient performance, loaded/ unloaded	%	35.1 / 25.9
5.9	Acceleration time, loaded/ unloaded(10m)	sec	NA
5.10	Service brake	Foot	
Engine			
6.1	Engine manufacturer / type		MHI S6SDT
6.2	Engine power acc. to ISO 1585		64.7
6.3	Rated speed		1/min
6.4	No. of cylinder / cubic capacity		anz/ cm³
6.5	Fuel consumption acc. To VDI cycle		ℓ /h
Other Details			
8.1	Type of drive control		Power Shaft
8.2	Operating pressure		bar
8.3	Oil volume		ℓ
8.4	Sound level at driver's ear according to DIN 12 053		db(A)



■ Some of the photos may include optional equipment.

80D-7

FORKLIFT TRUCKS

**HYUNDAI**  
HEAVY INDUSTRIES CO., LTD.

**HYUNDAI**  
HEAVY INDUSTRIES CO., LTD.

сервис **кад**  
HYUNDAI SERVICE CENTER

Телефон в Челябинске  
+7(351) 772-74-74  
Телефон в Екатеринбурге  
+7(343) 310-22-20  
(многоканальный)



## Absolute Power, The new master on the job-site !

New concept forklift truck 80D-7 will increase your productivity more than ever.

### 80D -7

### Powerful Engine Mitsubishi S6S-DT Engine

The six cylinders turbo-charged engine is built for power, reliability and economy. This engine meets EPA tier II and EU stage II emission regulation.



### Faster Travel Speed & Gradeability

The powerful high-output engine provides greater acceleration, better gradeability and faster travel speed on any tough terrain or slope.

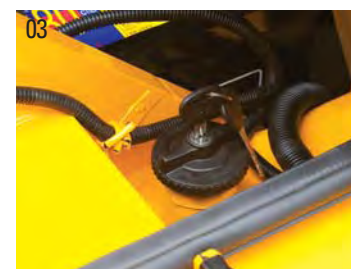


#### 01\_Increased mast tilting angle

Utilizing the mast tilting angle of 15 degrees forward and 10 degrees backward, the operator can safely and rapidly perform loading and unloading jobs.

#### 02\_Fully hydrostatic power steering

A hydraulic steering system always guarantees smooth and flexible steering, preventing overrun and kick-back.



#### 03\_Key-locking fuel filler

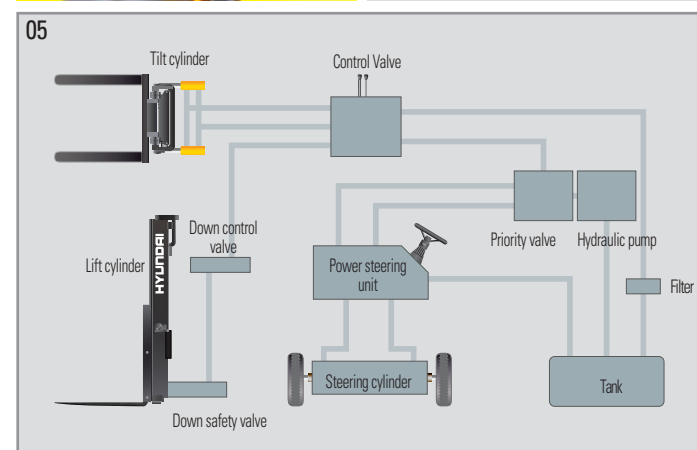
Increased security on job sites with locking fuel cap, plus an increased capacity fuel tank for less down time.

#### 04\_Wet disc brake system

The adoption of wet disc type brake improves brake performance. Service intervals 5 times longer than drum brake.

#### 05\_State-of-the-art hydraulic system

The latest large-capacity hydraulic system reacts quickly during operation, and a low-noise control valve increases both efficiency and durability.



### Fast and stable performance

Being able to quickly raise and lower the mast, as well as tilt it forward and backward, provides the best operational conditions during unloading. When the truck is fully loaded, mast lowering speed is carefully controlled to ensure safety by the down control valve.



#### 06\_High durable mast

Included side roller with great durability for mast and carriage.

#### 07\_Expansion bellows

The expansion bellows absorbs vibration and reduces noise generated from the exhaust gas system and also extends the life cycle of exhaust gas system.

#### 08\_Fuel Tank Safety Valve

Integrated Safety Check Valve shuts off fuel supply in the unlikely condition of a truck overturn.

#### 09\_Large footboard

Wide "open" step offers convenience and safety when entering and exiting truck.

#### 10/11\_Bright, protected headlights and rear working light

Bright, protected headlights and rear working light are positioned for exceptional visibility.

#### 12\_Full-automatic Transmission

Full-automatic transmission gives easy, convenient handling and soft, smooth shifting. The operator can select two kinds of automatic mode. (1st↔3rd, 2nd↔3rd)

#### 13\_Durable drive axle

The hypoid type planetary reduction drive axle delivers the desired torque to the drive wheels smoothly.

#### 14\_Heavy duty single unit frame

Heavy duty single unit type frame, designed on the basis of accurate structural analysis, guarantees durability and safety.

Some of the photos may include optional equipment.



Ergonomics driving space design !

A design based on human engineering relieves fatigue and increase operator's efficiency.

80D -7



■ Some of the photos may include optional equipment.



01\_Ergonomically positioned pedals

Based on human engineering, the accelerator, brake and inching pedals are optimally positioned for convenience while operating the equipment.

02\_The latest anti-vibration and shock absorbing system

The state-of-the-art hydraulic suspension cab system, using hydraulic and anti-vibration rubber insulator, is installed between the guard and truck frame to reduce the source of vibration and noise while driving. This not only reduces operator's fatigue but also increases safety.

03\_Adjustable steering wheel

Steering wheel can be adjusted by a lever on the right-hand side for the most comfortable operator position.

04\_Easy and safe shift lever

A single lever on the left side of the steering column gives the operator fast, easy control of speed and direction. The engine can be started in case of neutral position of this lever.

05\_Multi-function switch lever

Multi-functional switch lever gives easy access to lights and horn.

06\_Quick Response of Operating Control Levers

Only minimal operator's effort is required for precise, safe and productive control.

07\_Strong overhead guard

The safety overhead guard meets EEC and ANSI regulations and protects the operator during hazardous jobs.

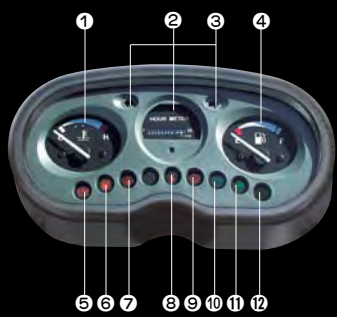
08\_Parking Brake

Toggle type parking brake requires less efforts for the operator to set.



■ Some of the photos may include optional equipment.

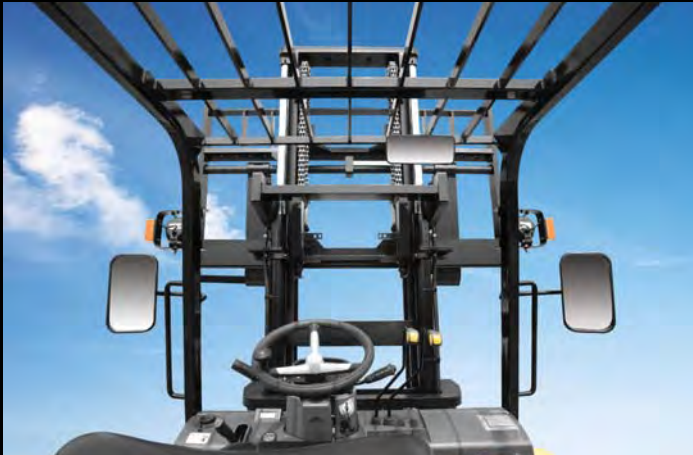
Operator friendly gauges and water-resistant monitor panel



- 1 Water temperature gauge
- 2 Hour meter
- 3 Directional indicators
- 4 Fuel gauge
- 5 Parking Brake
- 6 Fuel warning lamp
- 7 Engine oil warning lamp
- 8 Battery charging warning lamp
- 9 Air cleaner filter warning light
- 10 Head light indicator
- 11 Working light indicator
- 12 Pre-heater indicator

Easily adjustable suspension seat

An attractive and adjustable seat, based on a human engineering design, provides great comfort, safety and durability.



New high visibility for safe operation

The operator is able to work with increased safety and accuracy due to a wider view mast.



Cup holder & console box

Additional storage spaces are located inside the operating space for operator's convenience.



FORKLIFT *Excellent* MODEL

Centralized design for  
easy service !

An ideal arrangement of component parts ensures easy access and convenience for maintenance.

80D -7



■ Some of the photos may include optional equipment.

01\_Large Open Engine Hood

Highly accessible engine compartment assures fast and efficient maintenance.



02\_Electrically Monitored Air Filter

Air cleaner sensor alerts the operator of a restricted air filter and allows replacement before damage.



03\_Easy Maintenance oil check

The T/M oil level can be checked easily without any disassembly.



04\_Brake fluid reservoir

Highly visible, easily accessible reservoir makes for quicker daily inspections.



05\_Transmission oil temp gauge

The temperature gauge is located in the dash and provides the operator with visual reference of the transmission temperature.



06\_Easy Change Air Cleaner

The air filter is readily accessible for cleaning or replacement.



07\_Maintenance free battery



08\_Engine oil condition check



09\_Easy-to-change radiator

OPSS (Operator Presence Sensing System)

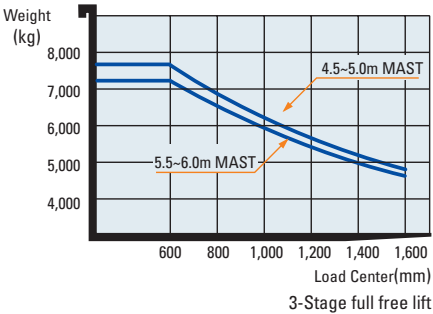
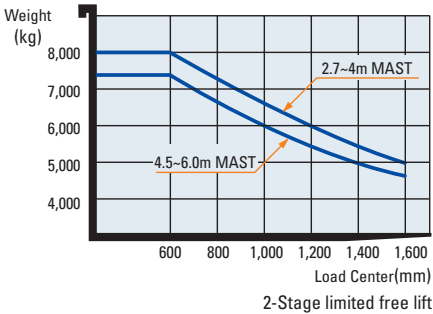
Control of mast tilting, lifting and lowering is not possible through operation of the appropriate control when the operator is not in the normal position.(Option)

Mast Specifications

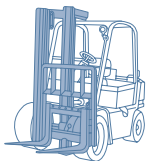
Mast Type		Maximum Fork Height	Overall Height(mm)				Tilt Angle		Load Capacity At 600mm 24 in LC	Truck Weight	Free Lift(mm)		
			Lowered	Extended			Fwd	Bwd			With bkr	With / o bkr	With bkr (Option)
				With bkr	With / o bkr	With bkr (Option)							
		mm(in)	mm(in)	mm(in)	mm(in)	mm(in)	deg	deg	kg(lb)	kg(lb)	mm(in)	mm(in)	mm(in)
2 / Stage limited free lift	V270	2,740 (107.9)	2,525 (99.4)	4,050 (159.4)	4,048 (159.4)	4,075 (160.4)	15	10	8,000 (17,640)	11,091 (24,400)	150 (5.9)	150 (5.9)	150 (5.9)
	*V300	3,040 (119.7)	2,675 (105.3)	4,350 (171.3)	4,348 (171.2)	4,375 (172.2)	15	10	8,000 (17,640)	11,140 (24,580)	150 (5.9)	150 (5.9)	150 (5.9)
	V330	3,340 (131.5)	2,825 (111.2)	4,650 (183.1)	4,648 (183.0)	4,675 (184.1)	15	10	8,000 (17,640)	11,189 (24,616)	150 (5.9)	150 (5.9)	150 (5.9)
	V350	3,540 (139.4)	2,925 (115.2)	4,850 (190.9)	4,848 (190.9)	4,875 (191.9)	15	10	8,000 (17,640)	11,222 (24,688)	150 (5.9)	150 (5.9)	150 (5.9)
	V370	3,740 (147.2)	3,025 (119.1)	5,050 (198.8)	5,048 (198.7)	5,075 (199.8)	15	10	8,000 (17,640)	11,254 (24,759)	150 (5.9)	150 (5.9)	150 (5.9)
	V400	4,040 (159.1)	3,175 (125.0)	5,350 (210.6)	5,348 (210.6)	5,375 (211.6)	15	10	8,000 (17,640)	11,303 (24,867)	150 (5.9)	150 (5.9)	150 (5.9)
	V450	4,540 (178.7)	3,475 (136.8)	5,850 (230.3)	5,848 (230.2)	5,875 (231.3)	15	10	8,000 (17,640)	11,518 (25,340)	150 (5.9)	150 (5.9)	150 (5.9)
	V500	5,040 (198.4)	3,725 (146.7)	6,350 (250.0)	6,348 (249.9)	6,375 (251.0)	15	10	7,800 (17,199)	11,600 (25,520)	150 (5.9)	150 (5.9)	150 (5.9)
	V550	5,540 (218.1)	3,975 (156.5)	6,850 (269.7)	6,848 (269.6)	6,875 (270.7)	15	10	7,550 (16,648)	11,681 (25,698)	150 (5.9)	150 (5.9)	150 (5.9)
	V600	6,040 (237.8)	4,225 (166.3)	7,350 (289.4)	7,348 (289.3)	7,375 (290.4)	15	10	7,350 (16,207)	11,763 (25,879)	150 (5.9)	150 (5.9)	150 (5.9)
3 / Stage full free lift	TF450	4,570 (179.9)	2,750 (108.3)	5,880 (232.5)	5,902 (232.4)	5,905 (232.5)	15	10	8,000 (17,640)	11,788 (25,934)	1,440 (56.7)	1,418 (55.8)	1,415 (55.7)
	TF500	5,070 (199.6)	2,950 (116.1)	6,380 (252.2)	6,402 (252.1)	6,405 (252.2)	15	10	7,700 (16,979)	11,891 (26,160)	1,640 (64.6)	1,618 (63.7)	1,615 (63.6)
	TF550	5,570 (219.3)	3,150 (124.0)	6,880 (271.9)	6,902 (271.8)	6,905 (271.9)	15	10	7,450 (16,427)	11,993 (26,385)	1,840 (72.4)	1,818 (71.5)	1,815 (71.5)
	TF600	6,070 (239.0)	3,350 (131.9)	7,380 (291.5)	7,402 (291.5)	7,405 (291.5)	15	10	7,200 (15,876)	12,096 (26,611)	2,040 (80.3)	1,418 (79.4)	2,015 (79.3)

\* Standard

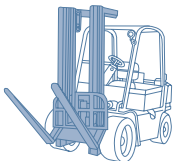
Load Capacity



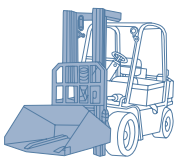
Various Attachments



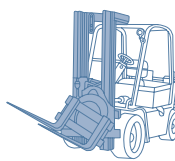
Side Shift



Hinged Fork



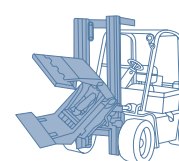
Hinged Bucket



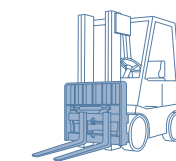
Rotating Fork



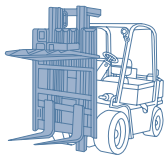
Push Pull



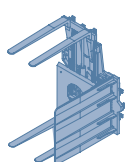
Rotating Roll Clamp



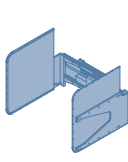
Fork Positioner



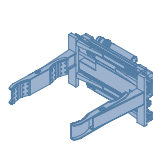
Load Stabilizer



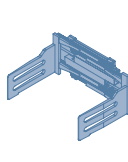
Pallet Invert



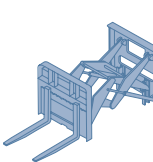
Carton Clamp



Drum Clamp



Bale Clamp



Load Extender

Optional Items

• FORK(L x W x T)

1350mm x 180mm x 70mm,  
1500mm x 180mm x 70mm,  
1800mm x 180mm x 70mm,

2000mm x 180mm x 70mm,  
2400mm x 180mm x 70mm

• OVER SHOE

1800mm, 2000mm, 2200mm, 2300mm

• TIRE : Solid

• SEAT : Safety Belt, Arm Rest  
• M.C.V : 3-Spool, 4-Spool

• REAR WORK LAMP

• INTERNAL PIPING  
• HOSS-REEL • BEACON  
• HAZARD • BACK BUZZER