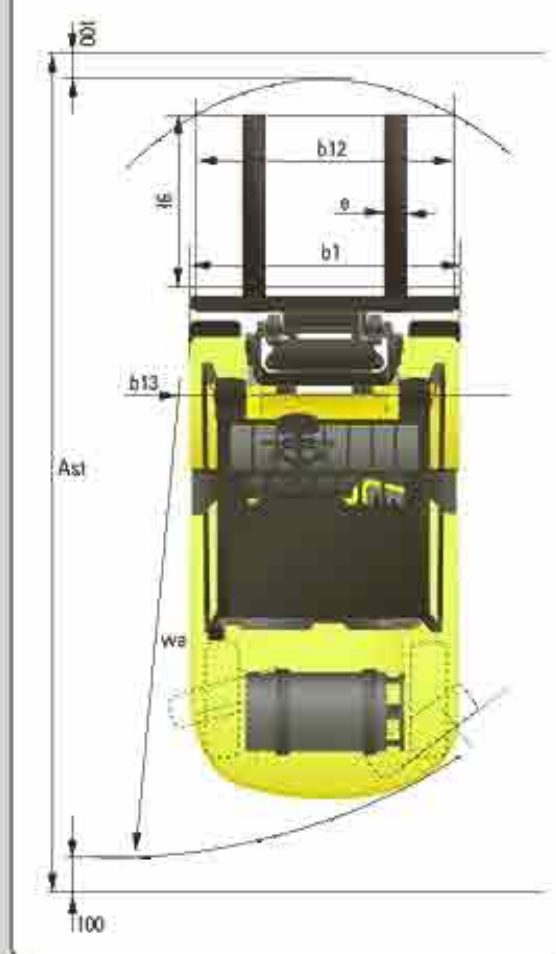


[illegible]

General information					
1.1	Manufacturer	Pneuma	Hydrex	Pneuma	Hydrex
1.2	Manufacturer's type designation	35-75	45-75	45-75	45-75
1.3	Drive electric (battery or motor) diesel (petroleum gas, manual)	EP	EP	EP	EP
1.4	Type of operation hand/pedestrian, climbing, wheel, self-propelled	wheel	wheel	wheel	wheel
1.5	Load capacity / rated load	0 kg	1500	4000	1500
1.6	Load center distance	c (mm)	400	400	400
1.8	Load distance, center of drive axle to fork	x (mm)	90	90	90
1.9	Wheelbase	y (mm)	2000	2000	2000
Weights					
2.1	Service weight	kg	570	670	670
2.2	Full loading, loaded loadmax	kg	800/110	104/130	100/130
2.3	Full loading, rated loadmax	kg	176/250	270/330	270/330
Wheels, Chassis					
3.1	Tire tread rubber, superplastic, pneumatic, polyurethane	Pneumatic / Solid / Poly	Pneumatic / Solid / Steel	Pneumatic / Solid / Steel	Pneumatic / Solid / Steel
3.2	Tire size, front (width x P)	425 x 15 x 10p	130 x 15 x 10p	130 x 15 x 10p	130 x 15 x 10p
3.3	Tire size, rear (width x P)	180 x 25 x 10p	180 x 25 x 10p	180 x 25 x 10p	180 x 25 x 10p
3.5	Wheels, number front x rear (self-driven wheels)	2x2	4x2	4x2	4x2
3.6	Track width, front	610 (mm)	1150	1200	1150
3.7	Track width, rear	611 (mm)	1140	1140	1140
Basic Dimensions					
4.1	Max. fork carriage lift forward / loadover lift (P) / degree	8/10	8/10	8/10	8/10
4.2	Lowered mast height	11 (mm)	220	220	220
4.3	Free lift	32 (mm)	130	130	130
4.4	Lift height	10 (mm)	300	300	300
4.5	Extended mast height	14 (mm)	424	424	424
4.6	Overhead load point / stall height	16 (mm)	230	230	230
4.8	Stall height / standing height	17 (mm)	130	130	130
4.12	Coupling height	10 (mm)	38	38	38
4.13	Device height	11 (mm)	435	435	435
4.20	Length to base of forks	2 (mm)	235	335	235
4.21	Overall width	17 (mm)	120	136	136
4.22	Fork dimensions	s / s (mm)	35 x 22 x 104	35 x 25 x 120	35 x 25 x 120
4.23	Fork carriage ISO 2028, class / type A/B	III / A	III / A	IV / A	IV / A
4.24	Fork carriage width	112 (mm)	130	130	130
4.31	Ground clearance, loaded, under load	11 (mm)	10	10	10
4.32	Ground clearance, center of wheelbase	12 (mm)	20	20	20
4.35	Aisle width for pallets 1000/1200 crossways	14 (mm)	150	150	150
4.36	Aisle width for pallets 1000/1200 lengthways	14 (mm)	475	475	475
4.35	Turning radius	W (mm)	200	200	200
4.36	Smallest pivotpoint distance	233 (mm)	100	100	100
Performance Data					
5.1	Travel speed, Unloaded	km/h	23	23	23
5.2	Lift speed, Loaded/Unloaded	mm/s	10/100	10/100	10/100
5.3	Lowering speed, Loaded/Unloaded	mm/s	90/400	90/400	90/400
5.6	Drawbar pull, Loaded	kg	400	550	550
5.7	Gradient performance, Loaded	%	10	10	10
5.10	Service brake	Hydraulic	Hydraulic	Hydraulic	Hydraulic
Engine					
6.1	Engine manufacturer / type	GM 4.3	GM 4.3	GM 4.3	GM 4.3
6.2	Engine power acc. to ISO 1585	kW	70	70	70
6.3	Rated speed	1/min	2300	2300	2300
6.4	No. of cylinders / cubic capacity	ccm	6 / 4206	6 / 4206	6 / 4206
Other Details					
8.2	Type of drive control	Power Shift	Power Shift	Power Shift	Power Shift
8.3	Operating pressure	bar	25/150	25/150	25/150
8.4	Oil volume	l/min	30	30	30
8.5	Noise	dB(A)	80	80	80



HYUNDAI LPG FORKLIFT TRUCKS *Applied Tier 4 Engine*

35L/40L/45L/50L-7A



Head Office (Sales Office)
110-15, HYUNDAI BUILDING 2/F, KYE-DONG, JONGNO-GU, SEOUL, KOREA 150-701
Tel: 82-2-111-146-2024, 2025 Fax: 82-2-111-146-1444, 1445

Address: 10000 Highway 100, Suite 100, Houston, TX 77036
 Tel: 281-465-1111 Fax: 281-465-1112

Example Operation | Hyosung Heavy Industries Sample N.V.
VOSTERHOUDING 1 V. Zedijkste 20, BELGIUM 3011 GZ | +31-55-2200 Fax: 031-14-94-0808



Телефон в Челябинске
+7(351) 772-74-74

Телефон в Екатеринбурге
+7(343) 310-22-20
(многоканальный)

www.kwaidai.co.jp

2010.10 Rev 0



NEW criteria of Forklift Trucks

Hyundai introduces a new line of 7A series
LPG forklift trucks.
Excellent power and performance make your
business more profitable.



■ Some of the photos may include optional equipment.



OPSS (Operator Presence Sensing System)

Control of mast tilting, lifting and lowering is not possible through operation of the appropriate control when the operator is not in the seated position.

The new master on the job-site!

Smooth running, efficient and ergonomically designed, 35/40/45/50L-7A series are made to meet your needs.

70Kw/2,300rpm



Powerful Engine GM 4.3L V6 Engine

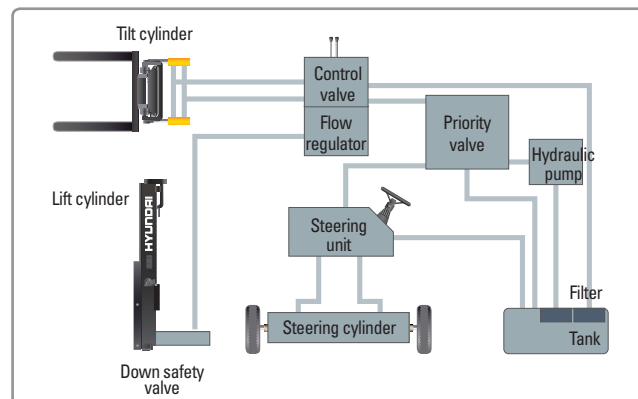
Market approved quality of GM 4.3L V6 engine ensures incomparable performance, durability and additional value to the machine. Powerful and efficient engine provides excellent fuel economy and excellent torque for improved operation.
(EPA/CARB Tier-IV Certified)

Fast and Stable Performance

Being able to quickly raise and lower the mast, as well as tilt it forward and backward, provides the best operational conditions during unloading.

When the truck is fully loaded, mast lowering speed is carefully controlled to ensure safety by the down control valve.

Mast(Lift and Tilt) Look System is standard.



State-of-the-art Hydraulic System

The latest large-capacity hydraulic system reacts quickly during operation, and a low-noise control valve increases both efficiency and durability.



Fully Hydrostatic Power Steering

A hydraulic steering system always guarantees smooth and flexible steering, preventing overrun and kick-back.



Increased Mast Tilting Angle

Utilizing the mast tilting angle of 8 degrees forward and 10 degrees backward, the operator can safely and rapidly perform loading and unloading jobs.

Faster Travel Speed & Better Gradability

The powerful high-output engine provides greater acceleration, better gradability and faster travel speed on any tough terrains or slopes.



Gradability(Loaded)

35L-7A : 40.5%	45L-7A : 31.6%
40L-7A : 36.2%	50L-7A : 28.7%

Travel Speed(Unloaded)

35L-7A : 23.8 km/h
40L-7A : 22.9 km/h
45L-7A : 22.9 km/h
50L-7A : 22.8 km/h

**High Power
Low Noise**



■ Some of the photos may include optional equipment.



Ergonomic operator friendly compartment design!

A design based on human engineering relieves fatigue and increases operator’s efficiency.

Operator Friendly Gauges and Water-resistant Monitor Panel

- 1 Parking brake lamp
- 2 Turn lamp
- 3 Engine oil warning lamp
- 4 Transmission oil temperature warning lamp
- 5 Battery charging warning lamp
- 6 Air cleaner filter warning light
- 7 Working light indicator
- 8 Seat belt warning
- 9 Water temperature gauge
- 10 OPS warning (option)
- 11 Hour meter
- 12 Engine check lamp



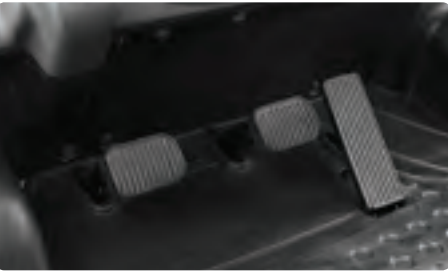
Full Suspension Seat
An attractive and adjustable seat, based on a human engineering design, provides great comfort, safety and durability.



New High Visibility for Safe Operation
The operator is able to work with increased safety and accuracy due to a wider view mast.



■ Some of the photos may include optional equipment.



Ergonomically Positioned Pedals
Based on human engineering, the accelerator, brake and inching pedals are optimally positioned for convenience while operating the equipment.



Cup Holder & Console Box
Additional storage spaces are located inside the operating space for operator's convenience.



Quick Response of Operating Control Levers
Only minimal operator's effort is required for precise, safe and productive control.



Adjustable Steering Wheel
Steering wheel with horn button can be adjusted by a lever on the right-hand side for the most comfortable operator position.



Easy and Safe Shift Lever
A single lever on the left side of the steering column gives the operator fast, easy control of direction. The lever must be in the neutral position before the engine can be started.



Secondary Horn
Secondary Horn gives access to lights and horn.

Danger-free through high durability!

Safety and durability are priorities in design of the equipment.



Strong Overhead Guard

The safety overhead guard meets ISO 6055 regulation and protects the operator during hazardous jobs.



Parking brake

Ratchet type parking brake requires less effort the operator to set.

Highly Durable Split type Drive Axle

The planetary reduction drive axle smoothly delivers desired torque to the drive wheels.



■ Some of the photos may include optional equipment.



Large Footboard & Hand Grip

Wide "open" step offers convenience and safety when entering and exiting truck.



Expansion Bellows

The expansion bellows absorbs vibration and reduces noise generated from the exhaust system and also extends the life cycle of exhaust system.



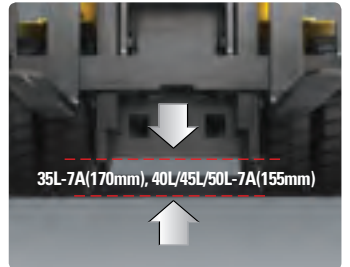
Heavy Duty Single Unit Frame

Heavy duty single unit type frame, designed on the basis of accurate structural analysis, guarantees durability and safety.



Bright, Protected Headlights

Bright, Protected head lights are positioned for exceptional visibility.



Ground Clearance

The engine and transmission are assembled horizontally and positioned high in the frame to protect major components during operation on rugged surface.

Designed for quick and easy service!

An ideal arrangement of component parts ensures easy access and convenience for maintenance.

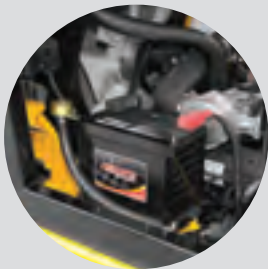


Easy Change Air Cleaner

The air filter is readily accessible for cleaning or replacement. (6inch Cyclone Type)



Fast Service Access for Daily Fluids Check



Maintenance Free Battery



Aluminum Radiator with Superb Protection Against heat



Removable Side Panels for Ease of Service



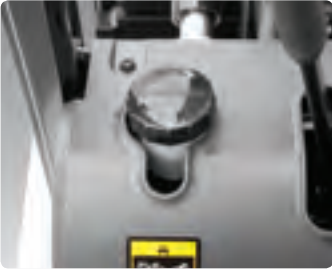
Easy access of electrical Components

Various electric parts are centralized in dash board resulting in improvement in maintenance.



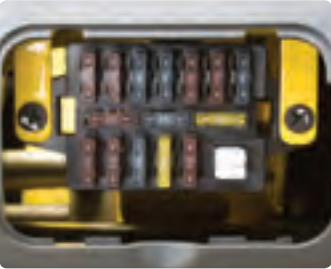
Easy Maintenance Oil Check

The T/M oil level can be checked easily without any disassembly.



Brake Fluid Reservoir

Highly visible, easily accessible reservoir makes for quicker daily inspections.



An Accessible, Compact Fuse Box for Easy Inspection

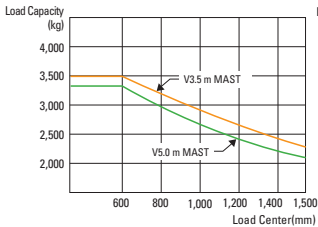
Mast Specification

Mast Type		Maximum Fork Height (mm)	Overall Height Lowered (mm)		Free Lift Height (mm)		Tilt Angle (deg)	Load Capacity without side shift at 600mm LC (kg)								Load Capacity with side shift at 600mm LC (kg)								Truck Weight (Unloaded) (kg)										
		Single Tire (mm)	Double Tire	With Backrest	Without Backrest	Single Tire				Double Tire				Single Tire				Double Tire				Single Tire				Double Tire								
						35L/40L 45L-7A	50L-7A	35L/40L 45L/50L-7A	35L/40L 45L-7A	50L-7A	35L/40L 45L-7A	50L-7A	Fwd/Bwd	35L-7A	40L-7A	45L-7A	50L-7A	35L-7A	40L-7A	45L-7A	50L-7A	35L-7A	40L-7A	45L-7A	50L-7A	35L-7A	40L-7A	45L-7A	50L-7A	35L-7A	40L-7A	45L-7A	50L-7A	
2-Stage Limited Free Lift	V270	2,720	2,630	2,085	2,070	120	120	120	120	8/10	3,500	4,000	4,500	5,000	3,500	4,000	4,500	5,000	3,500	4,000	4,500	5,000	3,500	4,000	4,500	5,000	5,563	6,027	6,440	6,906	5,718	6,133	6,549	7,018
	V300	3,020	2,930	2,235	2,220	120	120	120	120	8/10	3,500	4,000	4,500	5,000	3,500	4,000	4,500	5,000	3,500	4,000	4,500	4,950	3,500	4,000	4,500	4,950	5,593	6,057	6,470	6,931	5,748	6,163	6,597	7,043
	V330	3,320	3,230	2,385	2,370	120	120	120	120	8/10	3,500	4,000	4,500	5,000	3,500	4,000	4,500	5,000	3,500	4,000	4,450	4,850	3,500	4,000	4,450	4,850	5,631	6,095	6,508	6,956	5,786	6,201	6,617	7,068
	V360	3,620	3,430	2,535	2,520	120	120	120	120	8/10	3,500	4,000	4,500	5,000	3,500	4,000	4,500	5,000	3,450	3,950	4,400	4,800	3,450	3,950	4,400	4,800	5,854	6,118	6,531	6,981	5,809	6,224	6,640	7,093
	V370	3,720	3,630	2,635	2,620	120	120	120	120	8/10	3,500	4,000	4,500	5,000	3,500	4,000	4,500	5,000	3,400	3,900	4,350	4,750	3,400	3,900	4,300	4,750	5,674	6,138	6,551	6,998	5,829	6,244	6,660	7,109
	V400	4,020	3,930	2,845	2,830	120	120	120	120	8/10	3,500	4,000	4,500	4,900	3,500	4,000	4,500	5,000	3,350	3,800	4,250	4,650	3,350	3,800	4,250	4,650	5,717	6,181	6,594	7,033	5,871	6,287	6,702	7,145
	V450	4,520	4,430	3,095	3,080	120	120	120	120	8/6	3,450	3,900	4,350	4,750	3,450	3,950	4,350	4,800	3,250	3,700	4,100	4,450	3,250	3,700	4,100	4,500	5,829	6,293	6,706	7,136	5,984	6,399	6,815	7,248
2-Stage full Free Lift	V500	5,020	4,930	3,345	3,330	120	120	120	120	8/6	3,350	3,750	4,200	4,600	3,350	3,850	4,250	4,650	3,150	3,550	4,000	4,300	3,150	3,600	3,950	4,350	5,880	6,344	6,757	7,178	6,035	6,450	6,866	7,280
	VF280	2,805	2,697	2,135	2,120	1,258	905	919	1,223	8/8	3,500	4,000	4,500	5,000	3,500	4,000	4,500	5,000	3,500	4,000	4,500	5,000	3,500	4,000	4,500	5,000	5,604	6,068	6,476	6,924	5,756	6,171	6,585	7,036
	VF300	3,005	2,897	2,235	2,220	1,358	1,005	1,019	1,323	8/8	3,500	4,000	4,500	5,000	3,500	4,000	4,500	5,000	3,500	4,000	4,500	4,950	3,500	4,000	4,500	4,950	5,630	6,094	6,502	6,949	5,782	6,197	6,611	7,061
	VF315	3,155	3,047	2,325	2,310	1,448	1,095	1,109	1,413	8/8	3,500	4,000	4,500	5,000	3,500	4,000	4,500	5,000	3,450	4,000	4,500	4,900	3,500	4,000	4,450	4,900	5,650	6,114	6,502	6,967	5,802	6,216	6,630	7,079
3-Stage Full Free Lift	TF370	3,730	3,672	2,035	2,020	812	807	1,139	1,074	8/8	3,500	4,000	4,500	5,000	3,500	4,000	4,500	5,000	3,300	3,850	4,250	4,700	3,350	3,850	4,250	4,650	5,820	6,284	6,697	7,108	5,975	6,355	6,808	7,212
	TF400	4,030	3,972	2,135	2,120	912	907	1,239	1,174	8/8	3,450	4,000	4,450	4,900	3,500	4,000	4,450	4,900	3,250	3,750	4,200	4,600	3,300	3,750	4,150	4,600	5,850	6,314	6,727	7,134	6,005	6,385	6,838	7,238
	TF430	4,330	4,272	2,235	2,220	1,012	1,007	1,339	1,274	8/8	3,400	3,900	4,350	4,800	3,450	3,950	4,350	4,800	3,150	3,700	4,100	4,500	3,200	3,700	4,100	4,500	5,881	6,345	6,758	7,159	6,036	6,416	6,869	7,263
	TF450	4,510	4,452	2,295	2,290	1,072	1,067	1,399	1,334	8/8	3,350	3,900	4,300	4,750	3,400	3,950	4,300	4,750	3,150	3,700	4,050	4,450	3,200	3,700	4,050	4,450	5,900	6,364	6,777	7,176	6,055	6,435	6,888	7,279
	TF470	4,720	4,662	2,385	2,390	1,162	1,157	1,489	1,424	8/8	3,300	3,850	4,250	4,650	3,350	3,900	4,250	4,700	3,100	3,600	4,000	4,400	3,150	3,650	4,000	4,400	5,936	6,400	6,813	7,199	6,091	6,471	6,925	7,303
	TF500	5,020	4,962	2,485	2,470	1,262	1,257	1,589	1,524	8/6	3,250	3,750	4,150	4,600	3,300	3,750	4,200	4,600	3,050	3,500	3,900	4,300	3,100	3,550	3,900	4,350	5,960	6,423	6,836	7,224	6,114	6,494	6,948	7,328
	TF550	5,520	5,462	2,665	2,650	1,442	1,437	1,769	1,704	8/6	3,100	3,600	4,000	4,450	3,250	3,650	4,050	4,500	2,750	3,250	3,650	4,200	3,000	3,450	3,800	4,200	6,021	6,485	6,898	7,276	6,175	6,555	7,009	7,380
TF600	6,030	5,972	2,845	2,830	1,622	1,617	1,949	1,884	8/6	2,600	3,050	3,300	4,150	3,100	3,500	3,900	4,350	2,450	2,900	3,100	3,950	2,900	3,300	3,650	4,100	6,089	6,553	6,966	7,317	6,244	6,624	7,077	7,420	

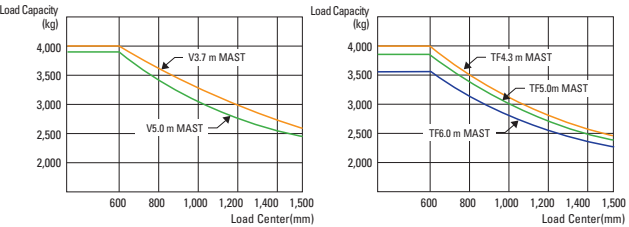
*Standard

Load Capacity

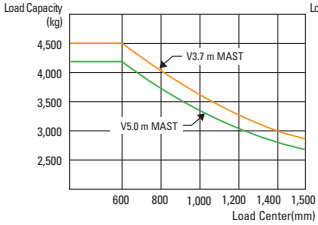
35L-7A



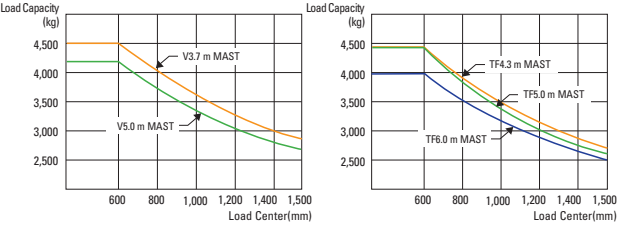
40L-7A



45L-7A



50L-7A



Optional Items

- CABIN
 - SIDE SHIFT
 - INTEGRAL FORK POSITIONER
 - FORK
 - 35L/40L-7A : 1,220, 1,370, 1,520, 1,670, 1,820, 1,970mm
 - 45L/50L-7A : 1,070, 1,370, 1,520, 1,670, 1,820, 1,970mm
 - OPPS (Travel / Travel + mast)
- OVER SHOE : 71 in, 79 in, 87 in
 - TILTING : 8/6°, 8/8°
 - TIRE : Cushion, No-marking, Double
 - SEAT : Pocket, Arm Rest, Hip Rest
 - LPG CLAMP : Swing Out
 - M.C.V : 4-Spool
- ATTACH PIPING : 3 Spool-piping, 4 Spool-piping
 - MASTER SWITCH
 - BEACON LAMP
 - HAZARD SWITCH
 - BRAKE PEDAL
 - Hydraulic Booster (w/o Accumulator)